

Product Installation Guide

Product Range

ANF DHC and BNF single naplock profiles

Product Description

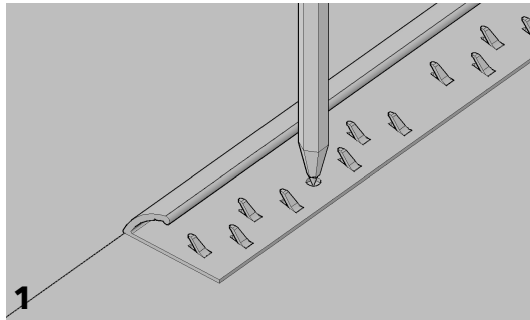
ANF DHC is an aluminium single naplock flooring profile designed to trap and protect the edge of the carpet to prevent it from fraying. For use where carpet meets resilient floorings such as LVT and Vinyl. Available in 8 high quality Designer Home Collection® finishes. Supplied in lengths of 0.900m and 2.715m.

BNF is a single naplock brass profile available in a range of finishes, including Polished Brass, Antique Brass, Antique Bronze and Chrome. Supplied in lengths of 0.900m and 2.715m.

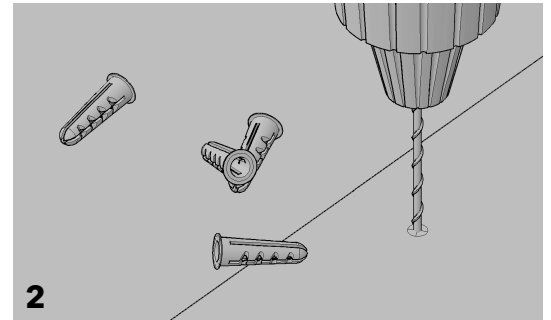
Both profiles are supplied with a pre-punched base to grip the carpet, suitable for mechanical fixing using size 6 screws.

Installation:

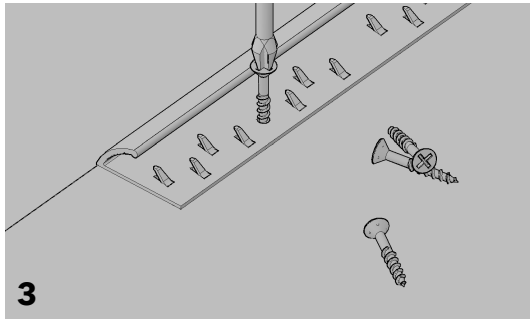
Ensure that the subfloor to which the profiles are to be fixed is in good order, dry and free from dust or any other contaminant that might compromise an effective installation.



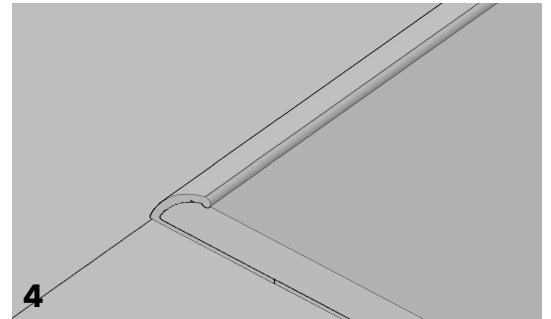
1 Make sure the sub-floor is clean from dust and dirt. Position the profile base section into place. Using the holes in the base as a guide, mark out the drill holes onto the substrate.



2 Using a 6mm masonry drill bit, drill the marked substrate. Insert a suitably sized plug to accommodate a 25mm No. 6 countersunk screw.



3 Apply a bead of cartridge adhesive to the underside of the base section and firmly position into place. Secure the base with a No. 6 countersunk screw.



4 Allow a few moments, and then fit the carpet up to the edge of the ANF or BNF and tuck into the profile, allowing the gripper to grab the carpet.

Profiles are supplied with a protective tape applied to the surface. We recommend that this tape is left in place until the project is complete.



CAT *recommends the use of STYCCO FLEX to fix any of its extensive range of floor trims, stair nosings, stair edgings and stair insert products. STYCCO FLEX is a rapid curing flexible adhesive with excellent gap filling properties that can be used outside as well as inside. *subject to following the instructions given by F. Ball and Co Ltd in their STYCCO FLEX product technical data sheet, safety data sheet and installation guidelines, available in full from: www.f-ball.com

Made with Precision, Finished with Care

CAT Flooring Accessories, Units 24 A,B,C, Park Avenue Estate, Luton, Bedfordshire LU3 3BP, U.K.

T: +44 (0) 1582 561 500

email: sales@catflooringaccessories.com

website: www.catflooringaccessories.com