

Product Installation Guide

Product Range

Ramps with a ribbed tread - mechanical fixing through tread

Product Description

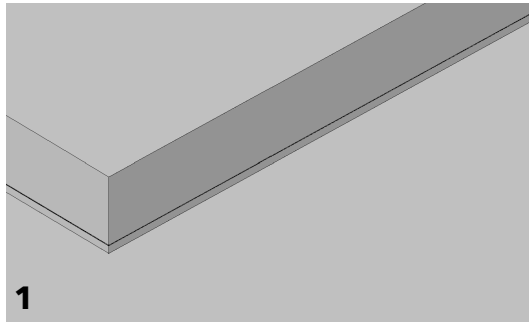
We offer ramps in aluminium and aluminium with bonded chequer plate cover supplied drilled through the tread for mechanical fixing. Suitable for size 8 screws.

Available in various lengths, finishes and heights to suit all flooring projects. Check our current Catalogue or website to see our complete range of ramps available.

Installation:

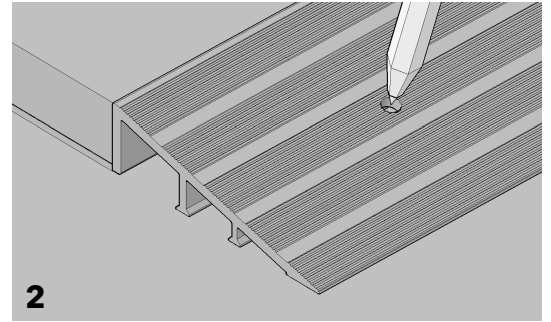
Ensure that the subfloor to which the profiles are to be fixed is in good order, dry and free from dust or any other contaminant that might compromise an effective installation.

Check to ensure that there are no water or heating pipes close to the surface of the subfloor which might get punctured by the fixing screws.



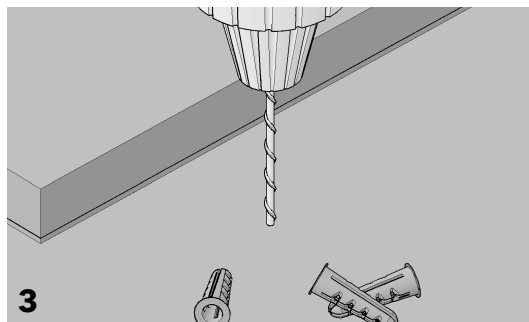
1

The flooring onto which the ramp profiles are to be affixed must be in good, sound order before commencing installation.



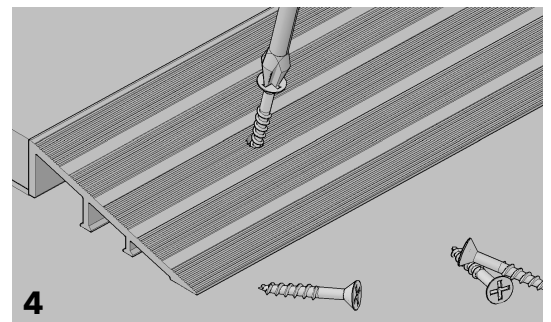
2

Ramps are supplied pre-drilled through the tread. Use the drill holes to mark the position to be drilled in the subfloor.



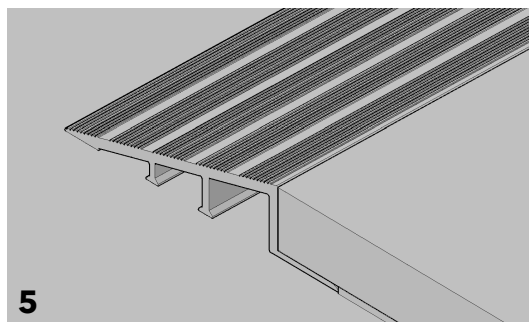
3

Remove the profile and drill pilot holes if fixing to timber and holes to accommodate a plastic plug if fixing to solid substrate.



4

Reposition the ramp profile over the pre-drilled holes and firmly secure with size 8 screws.



5

If installing a ramp with a tail plate, such as ARCP17/80, install the floor covering over the tail plate of the ramp once the profile has been secured.

Profiles are supplied with a protective tape applied to the surface. We recommend that this tape is left in place until the project is complete.

Made with Precision, Finished with Care

CAT Flooring Accessories, Units 24 A,B,C, Park Avenue Estate, Luton, Bedfordshire LU3 3BP, U.K.

T: +44 (0) 1582 561 500

email: sales@catflooringaccessories.com

website: www.catflooringaccessories.com