

Product Installation Guide

Product Range

Aluminium and brass stair tread inserts with PVC infill for retrofit fixings

Product Description

Extruded Aluminium and Brass profiles are available with either castellated or smooth-textured PVC slip-resistant infill, designed for on-site retrofit with concealed fixing.

Profiles are supplied either cut to customer-specified lengths or in stock lengths for on-site cutting, and come pre-drilled and countersunk for size 8 screws.

The PVC infill features double-sided adhesive tape pre-applied to the underside and is supplied slightly oversized for trimming during installation.

General:

For optimal performance and to prevent movement or 'rattle', it is recommended that stair tread inserts be installed using STYCCO FLEX adhesive in conjunction with screws.

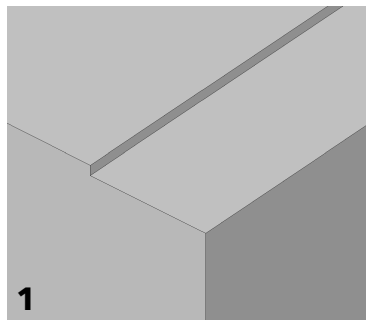
A sample should always be requested for approval prior to rebating for the finished profile or disc, as dimensions may vary slightly.

PVC infill should be installed at room temperature to avoid the risk of contraction. Exposure of the adhesive tape to dust, moisture, or other contaminants will compromise its performance and may result in product failure.

Ensure that all steps are level and in sound condition. Any necessary remedial work should be completed before installation. Where wet treatments are involved, allow full curing before proceeding.

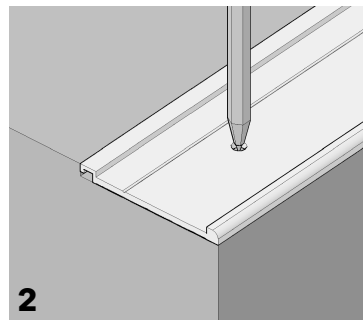
For further guidance, please contact the CAT Sales Office.

Installation:



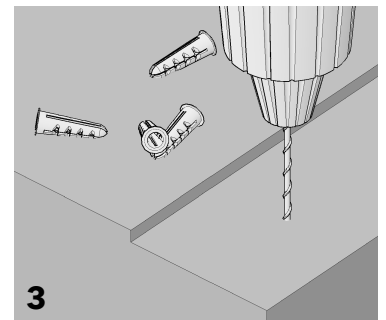
1

Prepare a rebate in the stair tread to accommodate the selected profile, allowing sufficient tolerance for minor dimensional variation and the inclusion of adhesive.



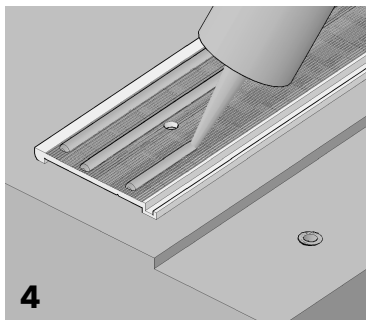
2

Position the stair tread insert profile onto the step and use it to accurately mark the location of the fixing holes. Ensure alignment is correct before proceeding.



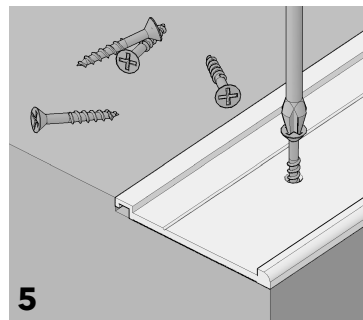
3

Drill the fixing holes in accordance with the substrate type. For timber, use pilot holes. For solid surfaces, install appropriate plastic plugs to provide a secure fixing.



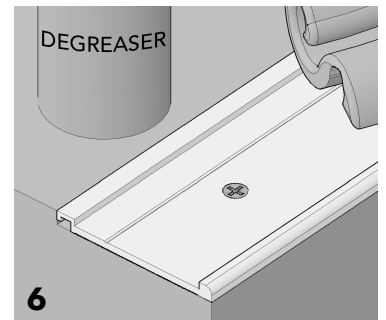
4

Apply two to three beads of a high-performance adhesive, such as STYCCO FLEX, to the underside of the profile. Reposition the profile onto the step, ensuring the holes in the profile align precisely with the drilled holes beneath.



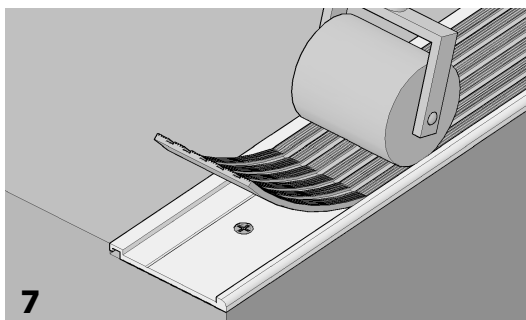
5

Fix the profile securely using suitable screws, ensuring that screw heads are flush with, or marginally below, the countersunk recesses.



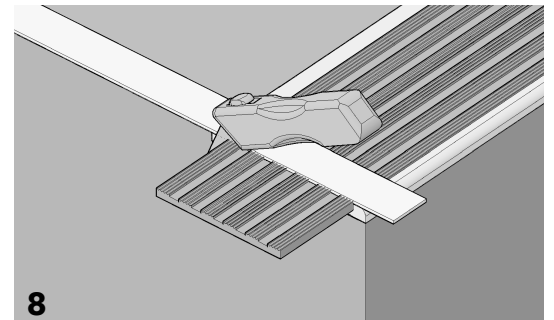
6

Clean the channel of the installed profile thoroughly using a suitable degreasing agent. All moisture, dust, and vapour must be completely removed before proceeding.



7

Peel back the protective layer from the PVC infill to expose the double-sided adhesive. Carefully press the infill into the channel, starting at one end and working methodically along the length. Do not stretch the material. For a secure bond, apply light, even pressure with a hand roller to eliminate air pockets.



8

Using a sharp craft knife and a straight edge, trim any excess infill flush with the edge of the profile.



Access to the stairs should only be permitted when the adhesive has had time to fully cure.

CAT *recommends the use of STYCCO FLEX to fix any of its extensive range of stair nosings, stair edgings and stair insert products. STYCCO FLEX is a rapid curing flexible adhesive with excellent gap filling properties that can be used outside as well as inside.

*subject to following the instructions given by F. Ball and Co Ltd in their STYCCO FLEX product technical data sheet, safety data sheet and installation guidelines, available in full from: www.f-ball.com

Made with Precision, Finished with Care

CAT Flooring Accessories, Units 24 A,B,C, Park Avenue Estate, Luton, Bedfordshire LU3 3BP, U.K.

T: +44 (0) 1582 561 500

email: sales@catflooringaccessories.com

website: www.catflooringaccessories.com